

# SKYLUXE

THE PINNACLE OF  
URBAN WATERFRONT  
LIVING

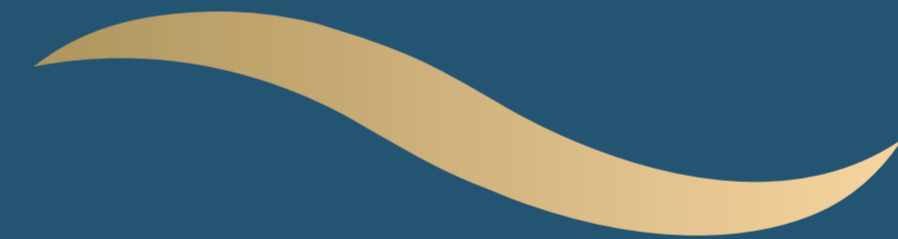


**DAMAC**



By crystal clear waters on sun-kissed urban shores, above the city, above the everyday, It's not just luxury that takes on new meaning, everything does.

Views are breath-taking vistas, relaxation is in an oasis of serenity, recreation is in an unimaginable playground, exquisite, designer décor is a way of life, and life...is unparalleled.



WELCOME TO SKYLUXE

DAMAC  
**BAY**  
BY CAVALLI

DAMAC  
**BAY2**  
BY CAVALLI

The World

CANAL  
**CROWN**  
de GRISOGONO

cavalli  
**COUTURE**

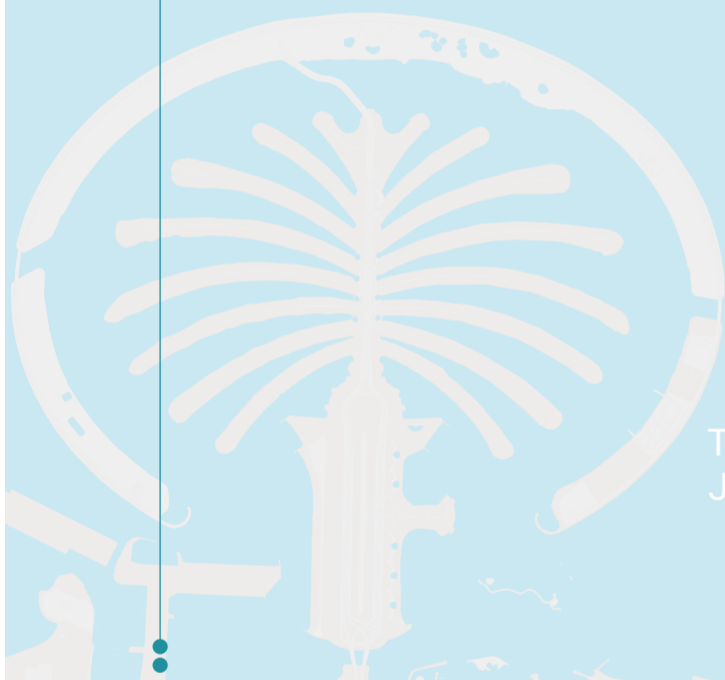
**CANAL  
HEIGHTS II**  
de GRISOGONO

Dubai  
Downtown

**CORAL REEF**

**HARBOUR  
LIGHTS**  
de GRISOGONO

Dubai Maritime  
City



The Palm  
Jumeirah



S  
K  
Y  
L  
U  
X  
E  
C  
O  
L  
L  
E  
C  
T  
I  
O  
N



*DAMAC*  
**BAY**  
BY CAVALLI

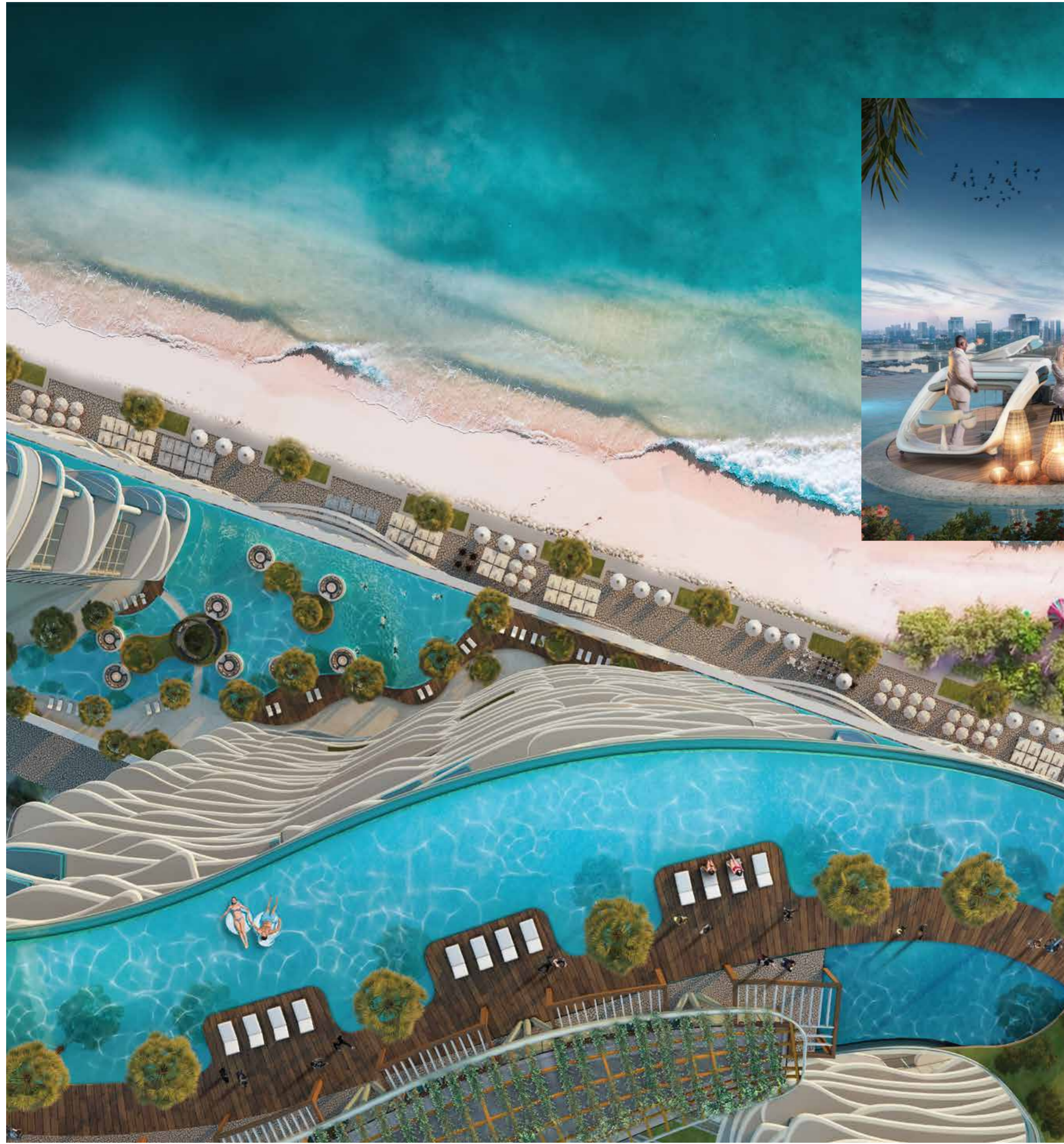
S  
K  
Y  
L  
U  
X  
E  
C  
O  
L  
L  
E  
C  
T  
I  
O  
N



## EXQUISITELY STYLISH SEAFRONT LUXURY

DAMAC Bay by Cavalli is an exquisite 42-storey development that blurs the boundaries between luxury and maritime bliss.

With stylish exteriors and nautical-themed interiors designed by the iconic fashion brand Cavalli, DAMAC Bay boasts breathtaking ocean views from every unit, infinity pools connecting you to the sea on the podium and rooftop as well as direct bay access from the ground level.



## HIGHLIGHTS

### Amenities at the lower podium

- Water maze
- Fashion snorkelling pool
- Hammock and chilling space

### Amenities on the roof

- Edutainment hub
- Opera house with dancing fountain
- Co-working spaces on the water
- Infinity pools
- Garden walkways in the sky



## A CUT ABOVE, A WORLD APART

Live on the edge of the horizon, where sea kisses sky, couture strikes a pose and life has space to breathe...the Skycrest Collection. These new, additional floors exude an inimitably chic sense of luxury across DAMAC Bay and DAMAC Bay 2.





# SKYCREST

COLLECTION

## SUPER LUXURY UNITS

UNIT	Min Area	Max Area	Min Price (AED)	Max Price (AED)
1-BEDROOM	716	921	3,274,000	4,417,000
2-BEDROOM	1,278	1,735	5,612,000	8,142,000
3-BEDROOM	2,010	2,144	8,775,000	9,896,000

## PAYMENT PLAN

Description	Milestone Event	(%) Value
DEPOSIT	Immediate	20
1st INSTALLMENT	Within 3 Months of Sale Date	4
2nd INSTALLMENT	Within 6 Months of Sale Date	4
3rd INSTALLMENT	Within 9 Months of Sale Date	4
4th INSTALLMENT	Within 12 Months of Sale Date	4
5th INSTALLMENT	Within 15 Months of Sale Date	4
6th INSTALLMENT	Within 18 Months of Sale Date	4
7th INSTALLMENT	Within 21 Months of Sale Date	4
8th INSTALLMENT	Within 24 Months of Sale Date	4
9th INSTALLMENT	Within 27 Months of Sale Date	4
10th INSTALLMENT	Within 30 Months of Sale Date	4
11th INSTALLMENT	Within 33 Months of Sale Date	4
12th INSTALLMENT	Within 36 Months of Sale Date	4
13th INSTALLMENT	Within 39 Months of Sale Date	4
14th INSTALLMENT	Within 42 Months Of Sale Date	4
15th INSTALLMENT	Within 45 Months Of Sale Date	4
16th INSTALLMENT	On Completion	20

4% DLD fee to be paid in addition to the initial deposit.





# 1-BEDROOM LUXURY UNITS



# 2-BEDROOM LUXURY UNITS



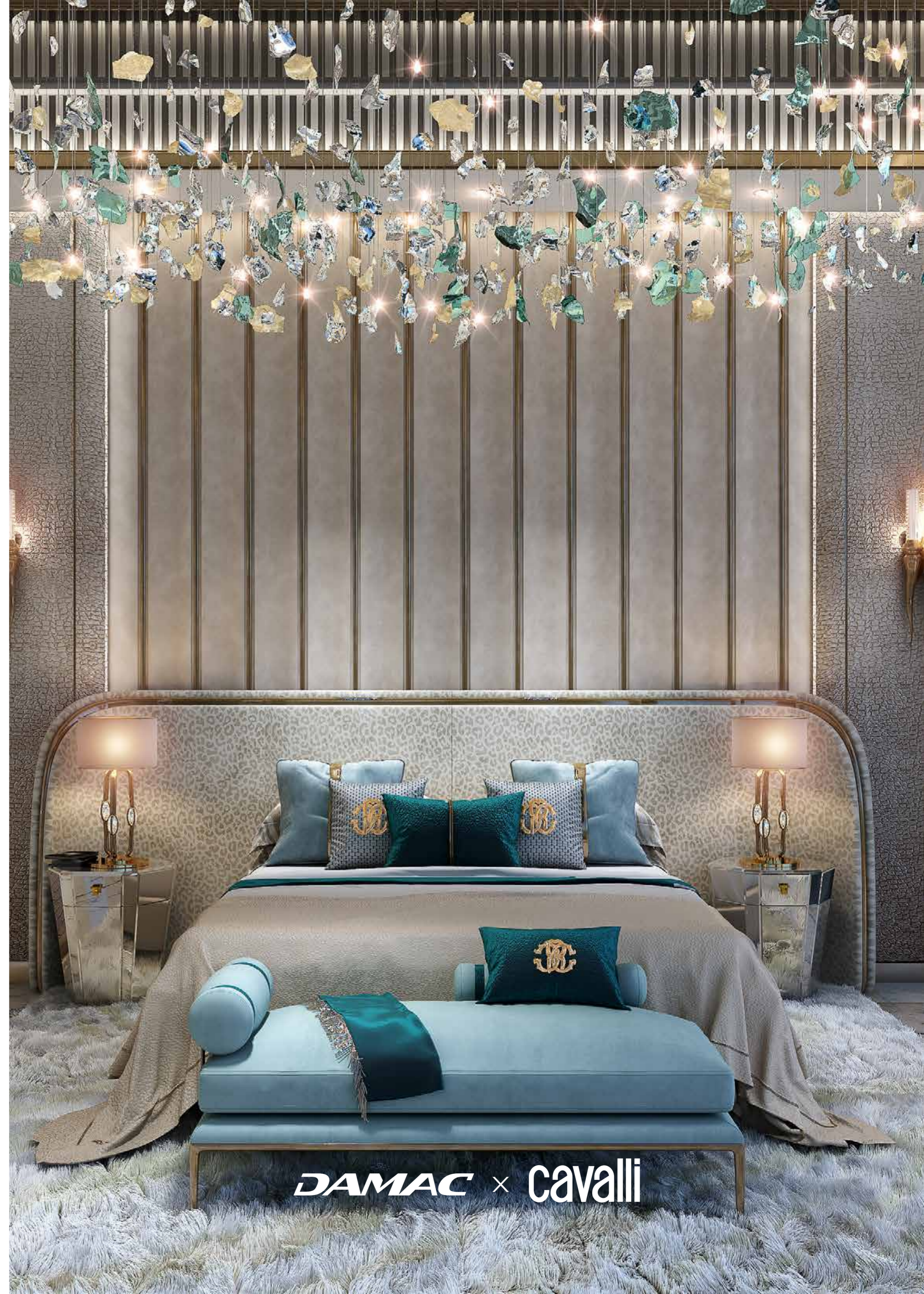
# 3-BEDROOM LUXURY UNITS



LOWER FLOOR



UPPER FLOOR



**DAMAC** × **cavalli**



DAMAC  
**BAY2**  
BY CAVALLI

S  
K  
Y  
L  
U  
X  
E  
C  
O  
L  
L  
E  
C  
T  
I  
O  
N



## WHERE YOUR WILD SIDE MEETS THE SEA

Elevate your perception of seafront luxury with DAMAC Bay 2 by Cavalli and experience a way of living that's untouched and untamed. Prepare to live in a naturally lush, tropical world and embrace the glamour of the wild – an escape into unbridled fantasy. This is paradise found.



## HIGHLIGHTS

### Amenities on level 1

- Cavalli museum
- Cavalli art & fashion studio
- Aqua treatment rooms
- Floating spa pods
- Boat-shaped hot tubs
- Yoga area

### Amenities on level 43

- Infinity pool
- Cavalli sushi bar
- Tropical treatment rooms
- Dream pods



**DAMAC** x **cavalli**



### LUXURY UNITS

UNIT	Min Area	Max Area	Min Price (AED)	Max Price (AED)
1-BEDROOM	737	872	3,196,000	3,671,000
2-BEDROOM	1,148	2,920	4,547,000	9,552,000
3-BEDROOM	1,778	3,375	7,040,000	10,850,000

## SKYCREST

COLLECTION

### LUXURY UNITS

UNIT	Min Area	Max Area	Min Price (AED)	Max Price (AED)
1-BEDROOM	785	871	3,562,000	3,966,000
2-BEDROOM	1,123	2,920	4,866,000	9,772,000
3-BEDROOM	1,623	3,375	7,117,000	11,951,000

### SUPER LUXURY UNITS

UNIT	Min Area	Max Area	Min Price (AED)	Max Price (AED)
3-BEDROOM DUPLEX	3,142	6,285	15,300,000	27,093,000
4-BEDROOM DUPLEX	5,844	6,060	29,628,000	30,119,000
5-BEDROOM DUPLEX	-	7,771	-	38,233,000

## PAYMENT PLAN

Description	Milestone Event	(%) Value
DEPOSIT	Immediate	20
1st INSTALLMENT	Within 3 Months of Sale Date	4
2nd INSTALLMENT	Within 6 Months of Sale Date	4
3rd INSTALLMENT	Within 9 Months of Sale Date	4
4th INSTALLMENT	Within 12 Months of Sale Date	4
5th INSTALLMENT	Within 15 Months of Sale Date	4
6th INSTALLMENT	Within 18 Months of Sale Date	4
7th INSTALLMENT	Within 21 Months of Sale Date	4
8th INSTALLMENT	Within 24 Months of Sale Date	4
9th INSTALLMENT	Within 27 Months of Sale Date	4
10th INSTALLMENT	Within 30 Months of Sale Date	4
11th INSTALLMENT	Within 33 Months of Sale Date	4
12th INSTALLMENT	Within 36 Months of Sale Date	4
13th INSTALLMENT	Within 39 Months of Sale Date	3
14th INSTALLMENT	Within 42 Months Of Sale Date	3
15th INSTALLMENT	Within 45 Months Of Sale Date	3
16th INSTALLMENT	Within 48 Months Of Sale Date	3
17th INSTALLMENT	On Completion	20

4% DLD fee to be paid in addition to the initial deposit.



1-BEDROOM  
LUXURY UNITS



2-BEDROOM  
LUXURY UNITS





# 3-BEDROOM LUXURY UNITS



3-BEDROOM  
SUPER LUXURY UNITS

SKYCREST  
COLLECTION



LOWER FLOOR



UPPER FLOOR

4-BEDROOM  
SUPER LUXURY UNITS

SKYCREST  
COLLECTION



LOWER FLOOR



UPPER FLOOR

5-BEDROOM  
SUPER LUXURY UNITS

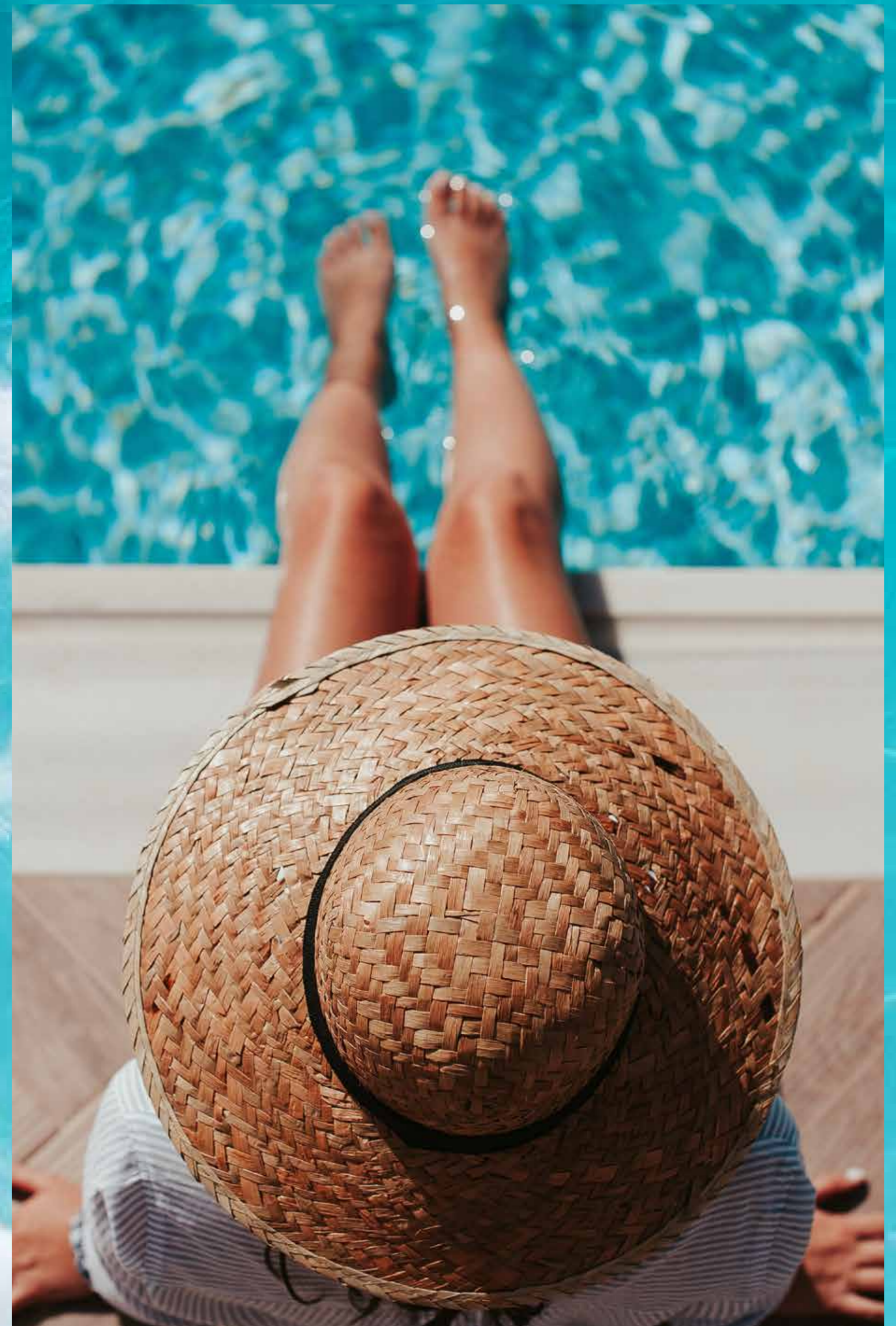
SKYCREST  
COLLECTION



LOWER FLOOR



UPPER FLOOR



cavalli  
COUTURE



S K Y L U X E C O L L E C T I O N

# DIVE INTO AMAZONIAN DECADENCE

Cavalli Couture on the Dubai Canal seamlessly blends opulence and the essence of the Amazon.

The iconic Cavalli brand is seen throughout, providing residents with a lavish 'villa in the sky' experience, complete with extravagant party terraces and private pools in every unit.





## HIGHLIGHTS

### Amenities at the lower podium

- Dubai's first infinity water lagoon
- Longest swimmable lagoon within a building
- Cavalli-branded gym and spa with floating treatment rooms
- Cavalli-branded cigar lounge, club rooms, floating juice bar and cabanas
- Lush tropical gardens
- Grandiose Cavalli-branded lobby

### Amenities on the roof

- Individual private sky gardens for penthouses with direct access from the duplex penthouses
- Private 'sky-party' terraces with infinity pools
- Large common infinity pool with cafe and F&B



**DAMAC** × cavalli



### TOWER A

UNIT	Min Area	Max Area	Min Price (AED)	Max Price (AED)
3-BEDROOM	3,910	4,422	21,307,000	24,652,000
4-BEDROOM	5,101	8,225	27,482,000	36,902,000
5-BEDROOM	7,923	10,945	41,518,000	53,524,000

### TOWER B

UNIT	Min Area	Max Area	Min Price (AED)	Max Price (AED)
3-BEDROOM	4,074	6,786	22,183,000	30,881,000
4-BEDROOM	5,563	7,269	30,413,000	33,871,000
5-BEDROOM	7,979	11,221	42,465,000	54,520,000

### PENTHOUSES

UNIT	Min Area	Max Area	Min Price (AED)	Max Price (AED)
6-BEDROOM	-	23,820	-	116,326,000
7-BEDROOM	-	26,457	-	121,554,000

## PAYMENT PLAN

Description	Milestone Event	(%) Value
DEPOSIT	Immediate	20
1st INSTALLMENT	Within 3 Months of Sale Date	4
2nd INSTALLMENT	Within 6 Months of Sale Date	4
3rd INSTALLMENT	Within 9 Months of Sale Date	4
4th INSTALLMENT	Within 12 Months of Sale Date	4
5th INSTALLMENT	Within 15 Months of Sale Date	4
6th INSTALLMENT	Within 18 Months of Sale Date	5
7th INSTALLMENT	Within 21 Months of Sale Date	5
8th INSTALLMENT	Within 24 Months of Sale Date	5
9th INSTALLMENT	Within 27 Months of Sale Date	5
10th INSTALLMENT	Within 30 Months of Sale Date	5
11th INSTALLMENT	Within 33 Months of Sale Date	5
12th INSTALLMENT	On Completion	30

4% DLD fee to be paid in addition to the initial deposit.





# 3-BEDROOM TOWER A & B



# 4-BEDROOM TOWER A



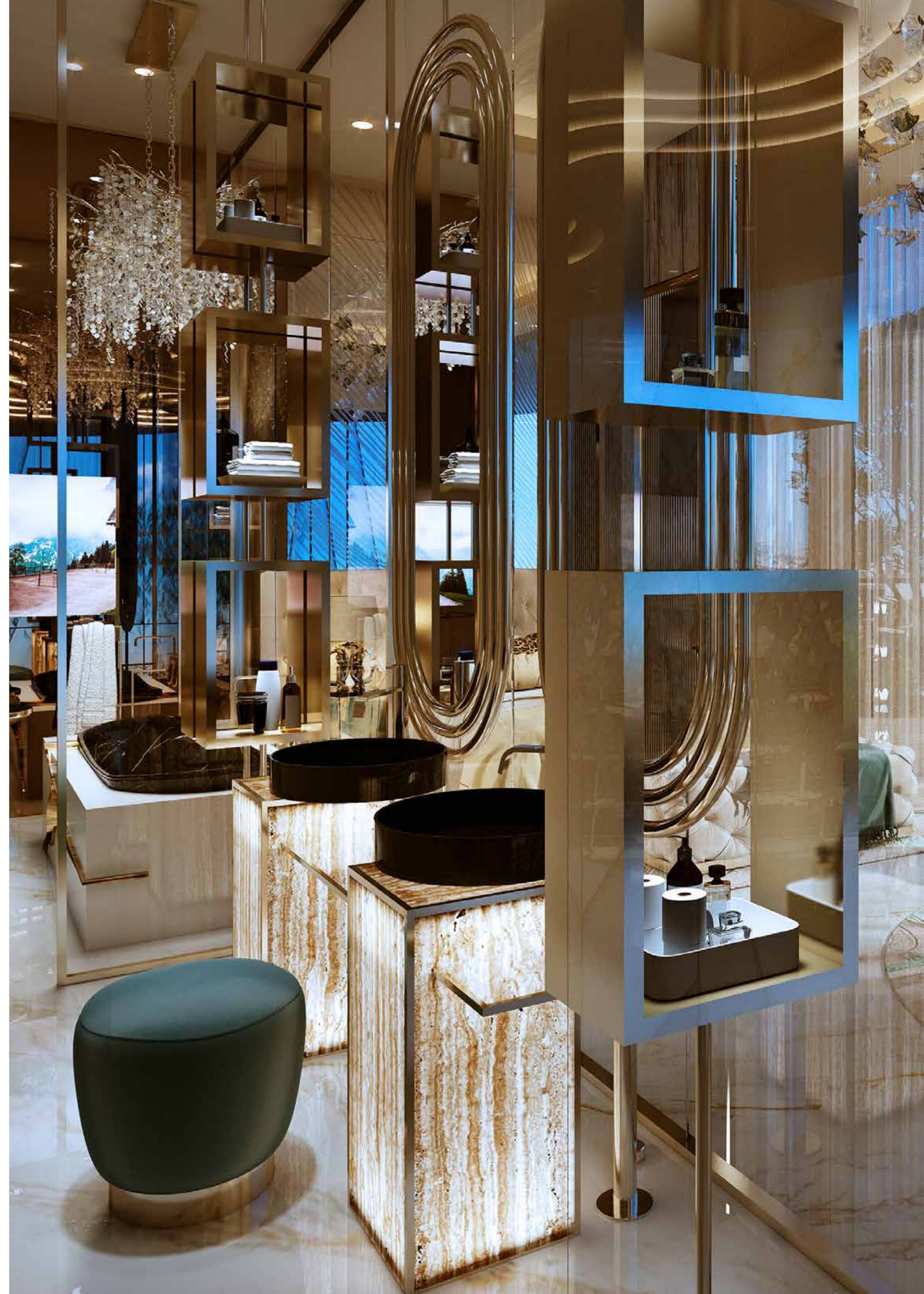
# 5-BEDROOM TOWER A & B



LOWER FLOOR



UPPER FLOOR



# CANAL HEIGHTS II

de GRISOGONO



S  
K  
Y  
L  
U  
X  
E  
C  
O  
L  
L  
E  
C  
T  
I  
O  
N



## WATERFRONT LUXURY, REINSPIRED

Standing proud at 44-storeys, Canal Heights 2 de GRISOGONO brings the beauty, splendour and brilliance of blue topaz to life. This tower is a masterpiece of vibrant living in Business Bay and enjoys Burj Khalifa views in a neighbourhood of other stylish high rises as well as hotels.

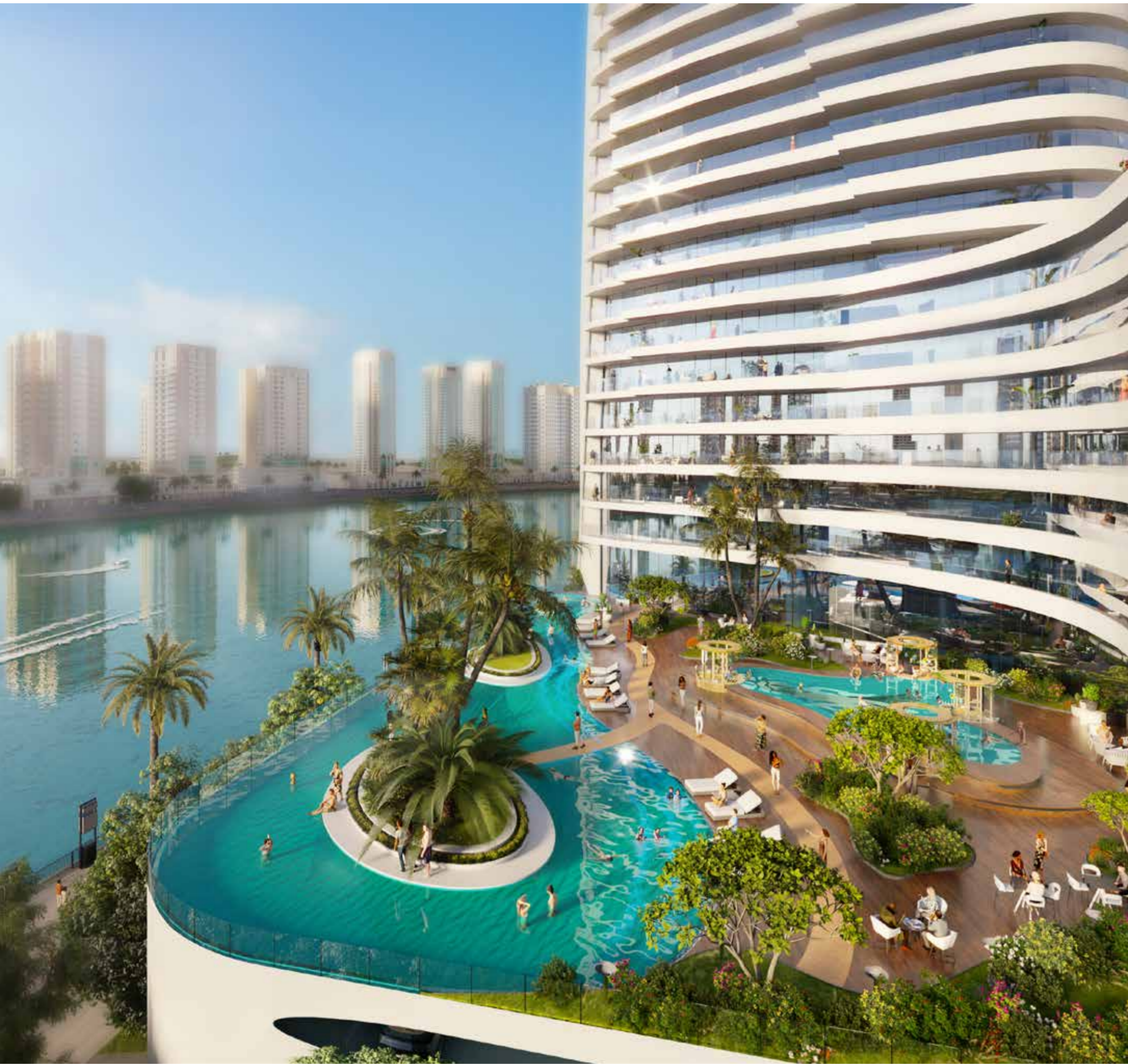


## HIGHLIGHTS

- Stars Lake
- Organic food and juice kiosks
- Tropical mocktail kiosk
- Elite Star Club
- Rooftop observation deck



**DAMAC** × de GRISOGONO



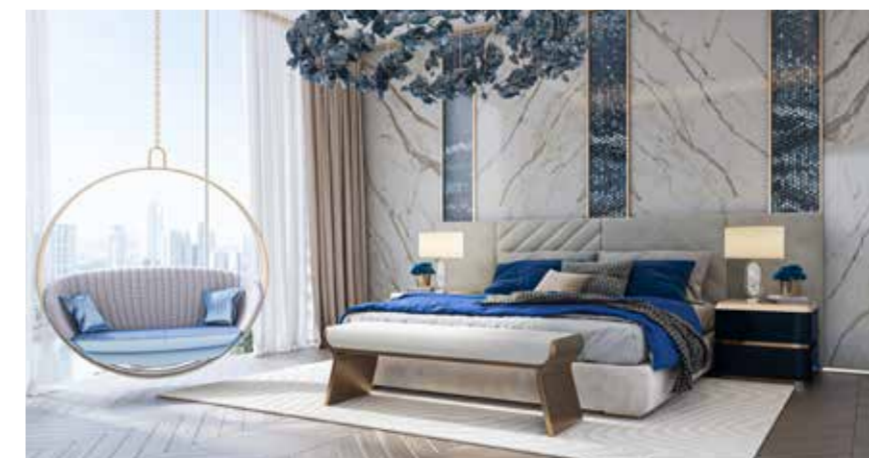
## PAYMENT PLAN

Description	Milestone Event	(%) Value
DEPOSIT	Immediate	20
1st INSTALLMENT	Within 3 Months of Sale Date	5
2nd INSTALLMENT	Within 6 Months of Sale Date	5
3rd INSTALLMENT	Within 9 Months of Sale Date	5
4th INSTALLMENT	Within 12 Months of Sale Date	5
5th INSTALLMENT	Within 15 Months of Sale Date	4
6th INSTALLMENT	Within 18 Months of Sale Date	4
7th INSTALLMENT	Within 21 Months of Sale Date	4
8th INSTALLMENT	Within 24 Months of Sale Date	4
9th INSTALLMENT	Within 27 Months of Sale Date	3
10th INSTALLMENT	Within 30 Months of Sale Date	3
11th INSTALLMENT	Within 33 Months of Sale Date	3
12th INSTALLMENT	Within 36 Months of Sale Date	3
13th INSTALLMENT	Within 39 Months of Sale Date	3
14th INSTALLMENT	Within 42 Months Of Sale Date	3
15th INSTALLMENT	Within 45 Months Of Sale Date	3
16th INSTALLMENT	Within 48 Months Of Sale Date	3
17th INSTALLMENT	On Completion	20

4% DLD fee to be paid in addition to the initial deposit.

## LUXURY UNITS

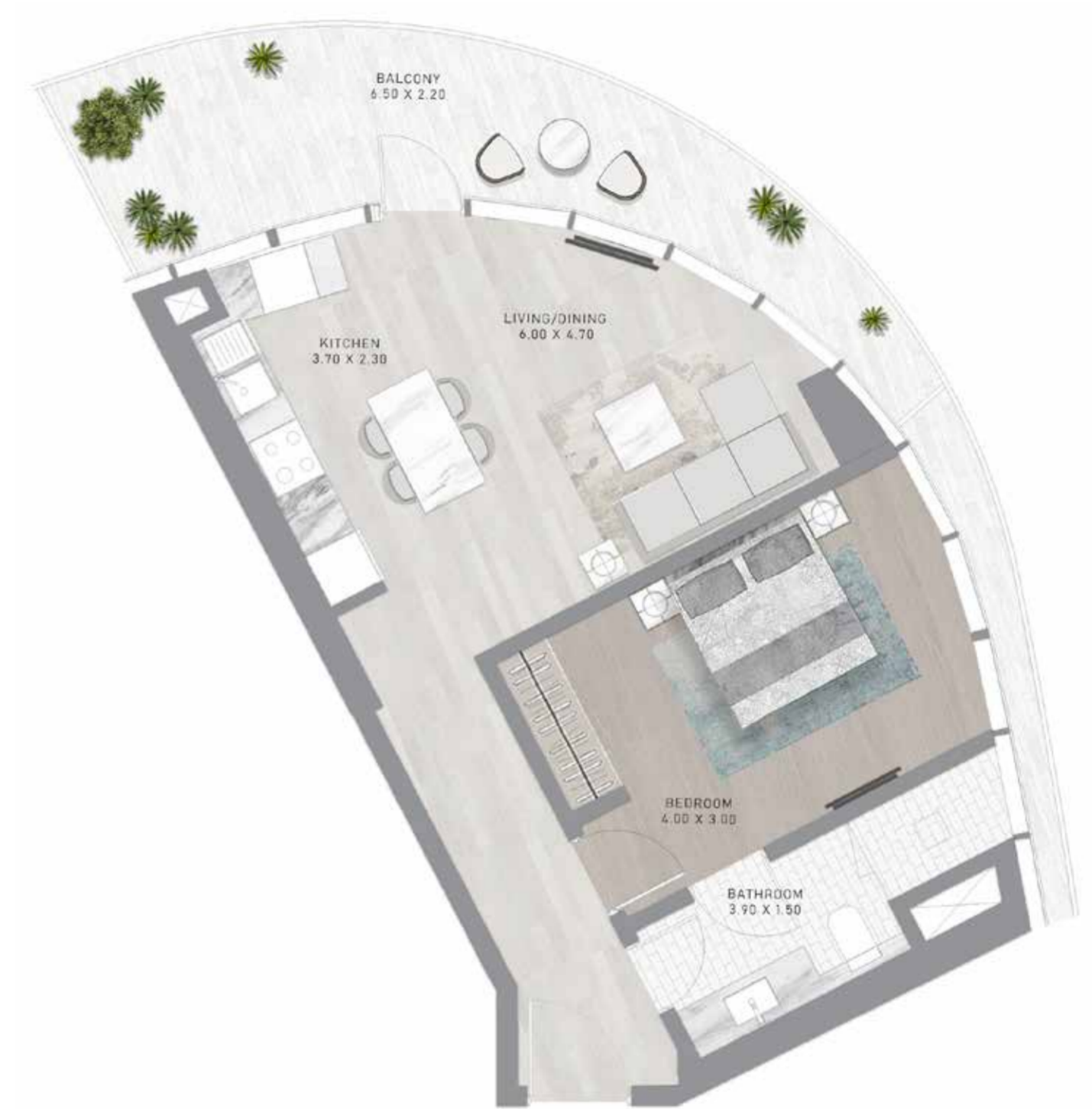
UNIT	Min Area	Max Area	Min Price (AED)	Max Price (AED)
STUDIO	441	523	1,245,000	1,515,000
1-BEDROOM	621	996	1,721,000	2,717,000
2-BEDROOM	1,274	3,992	3,404,000	4,554,000
3-BEDROOM	2,180	2,180	5,646,000	5,755,000



# STUDIO LUXURY UNITS



# 1-BEDROOM LUXURY UNITS

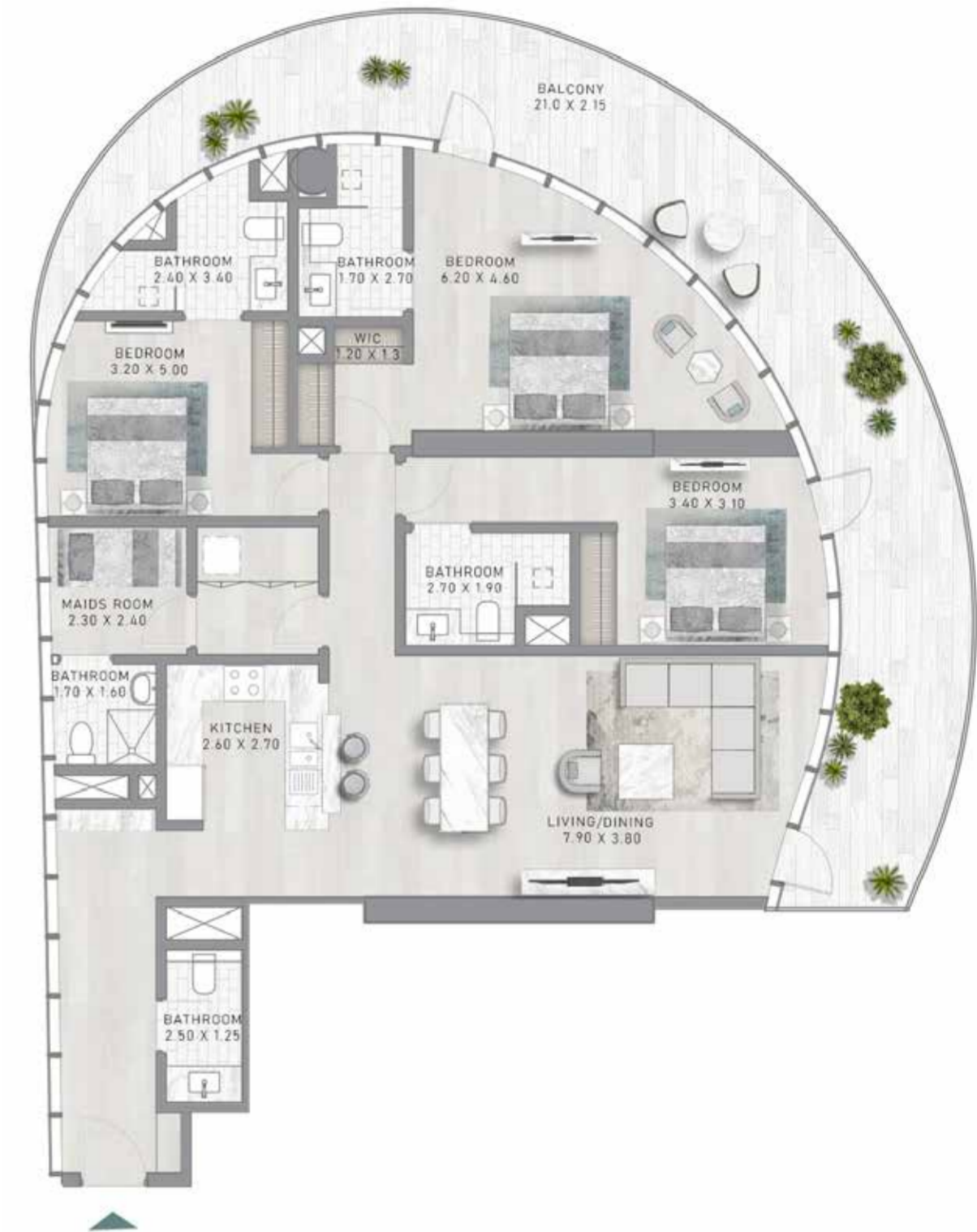




# 2-BEDROOM LUXURY UNITS



# 3-BEDROOM LUXURY UNITS



CANAL  
CROWN

de GRISOGONO



S  
K  
Y  
L  
U  
X  
E  
C  
O  
L  
L  
E  
C  
T  
I  
O  
N

# RISE ABOVE LUXURY

Turn each and every day into an ethereal experience, a life that is as adventurous and limitless as it is refined, sophisticated and unparalleled. At Canal Crown de GRISOGONO, you can embrace all the facets of waterfront living, from serenity to exhilaration, effortlessly.





## HIGHLIGHTS

- Planet-inspired garden
- Aqua exercise
- VR swimming experience
- UFO spa relaxation pods
- Rooftop observation deck



**DAMAC** × de GRISOGONO



## PAYMENT PLAN

Description	Milestone Event	(%) Value
DEPOSIT	Immediate	20
1st INSTALLMENT	Within 3 Months of Sale Date	5
2nd INSTALLMENT	Within 6 Months of Sale Date	5
3rd INSTALLMENT	Within 9 Months of Sale Date	5
4th INSTALLMENT	Within 12 Months of Sale Date	5
5th INSTALLMENT	Within 15 Months of Sale Date	4
6th INSTALLMENT	Within 18 Months of Sale Date	4
7th INSTALLMENT	Within 21 Months of Sale Date	4
8th INSTALLMENT	Within 24 Months of Sale Date	4
9th INSTALLMENT	Within 27 Months of Sale Date	3
10th INSTALLMENT	Within 30 Months of Sale Date	3
11th INSTALLMENT	Within 33 Months of Sale Date	3
12th INSTALLMENT	Within 36 Months of Sale Date	3
13th INSTALLMENT	Within 39 Months of Sale Date	4
14th INSTALLMENT	Within 42 Months Of Sale Date	4
15th INSTALLMENT	Within 45 Months Of Sale Date	4
16th INSTALLMENT	On Completion	20

4% DLD fee to be paid in addition to the initial deposit.

### LUXURY UNITS

UNIT	Min Area	Max Area	Min Price (AED)	Max Price (AED)
1-BEDROOM	789	1,222	1,994,000	2,682,000
2-BEDROOM	1,292	1,510	3,483,000	4,603,000

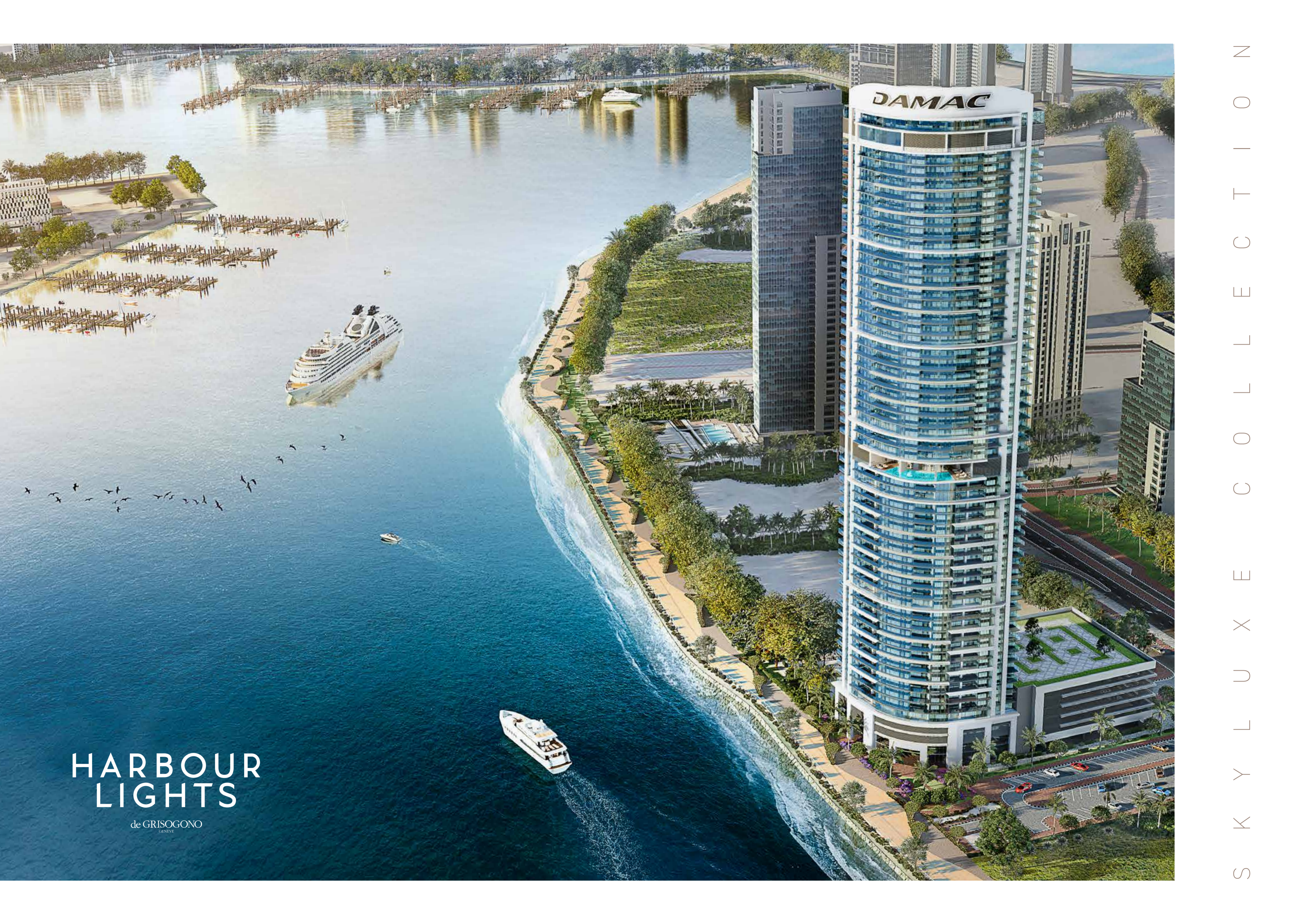


# 1-BEDROOM LUXURY UNITS



# 2-BEDROOM LUXURY UNITS





# HARBOUR LIGHTS

de GRISOGONO  
GENÈVE

S  
K  
Y  
L  
U  
X  
E  
C  
O  
L  
L  
E  
C  
T  
I  
O  
N





## BLISSFUL LIVING ON THE HORIZON

Immersed in the rhythmic ebb and flow of the ocean, and fuelled by a deep-seated passion for all things maritime, Harbour Lights stands tall and proud as a towering masterpiece of residential apartments. This 52-storey beacon of luxurious living embodies a waterfront dream, brought to life in the heart of Dubai Maritime City.



## HIGHLIGHTS

- Floating pool
- Spacious cabin-like rooms
- State of the art gym

S  
K  
Y  
L  
U  
X  
E  
C  
O  
L  
L  
E  
C  
T  
I  
O  
N





## PAYMENT PLAN

Description	Milestone Event	(%) Value
DEPOSIT	Immediate	20
1st INSTALLMENT	Within 3 Months of Sale Date	4
2nd INSTALLMENT	Within 6 Months of Sale Date	4
3rd INSTALLMENT	Within 9 Months of Sale Date	3
4th INSTALLMENT	Within 12 Months of Sale Date	3
5th INSTALLMENT	Within 15 Months of Sale Date	3
6th INSTALLMENT	Within 18 Months of Sale Date	3
7th INSTALLMENT	Within 21 Months of Sale Date	3
8th INSTALLMENT	Within 24 Months of Sale Date	3
9th INSTALLMENT	Within 27 Months of Sale Date	3
10th INSTALLMENT	Within 30 Months of Sale Date	3
11th INSTALLMENT	Within 33 Months of Sale Date	3
12th INSTALLMENT	Within 36 Months of Sale Date	3
13th INSTALLMENT	Within 39 Months of Sale Date	3
14th INSTALLMENT	Within 42 Months Of Sale Date	3
15th INSTALLMENT	Within 45 Months Of Sale Date	3
16th INSTALLMENT	On 70% Completion Milestone	1
17th INSTALLMENT	On 80% Completion Milestone	1
18th INSTALLMENT	On 90% Completion Milestone	1
19th INSTALLMENT	On Completion	30

4% DLD fee to be paid in addition to the initial deposit.

### LUXURY UNITS

UNIT	Min Area	Max Area	Min Price (AED)	Max Price (AED)
2-BEDROOM	1,191	1,232	2,591,000	2,877,000
3-BEDROOM	1,701	1,701	3,529,000	3,801,000



## 2-BEDROOM LUXURY UNITS



## 3-BEDROOM LUXURY UNITS



CORAL REEF

# CORAL REEF

COMING SOON



*DAMAC*

